

The Upper Tuolumne River Ecosystem Program

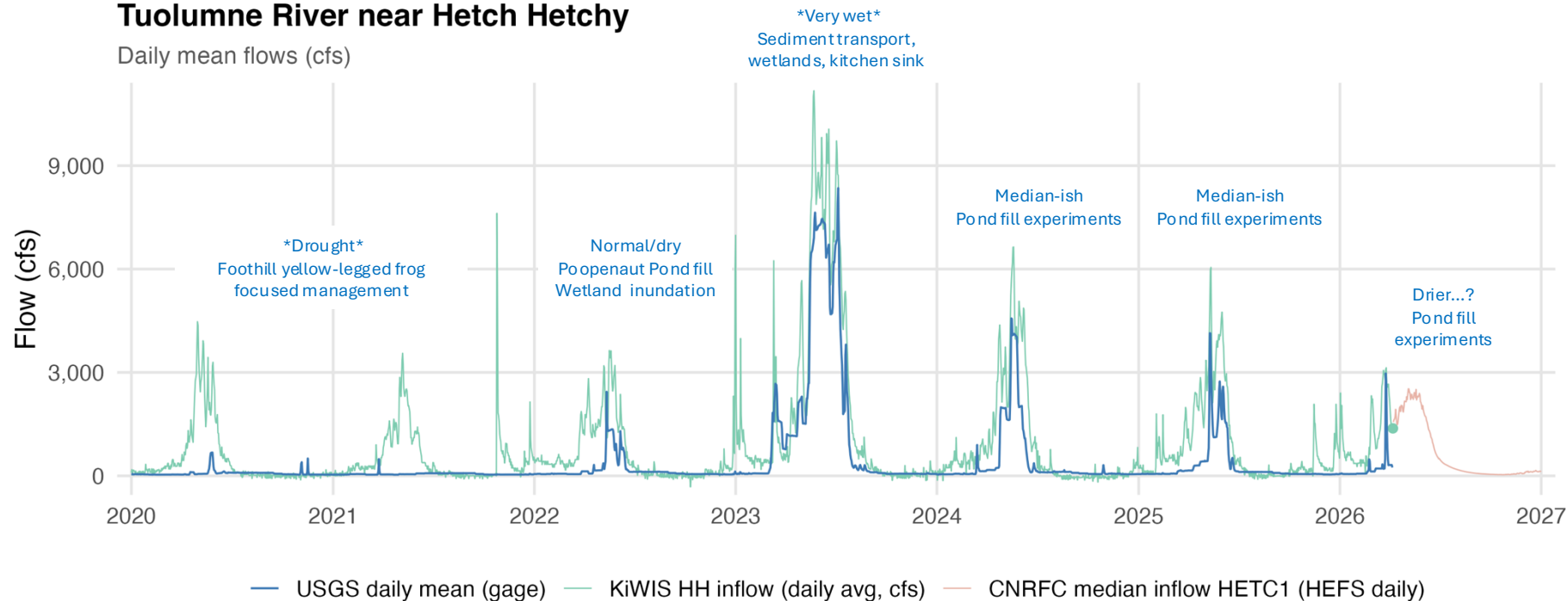
Spring 2026 Workgroup Meeting



Recent snowmelt management releases

Tuolumne River near Hetch Hetchy

Daily mean flows (cfs)

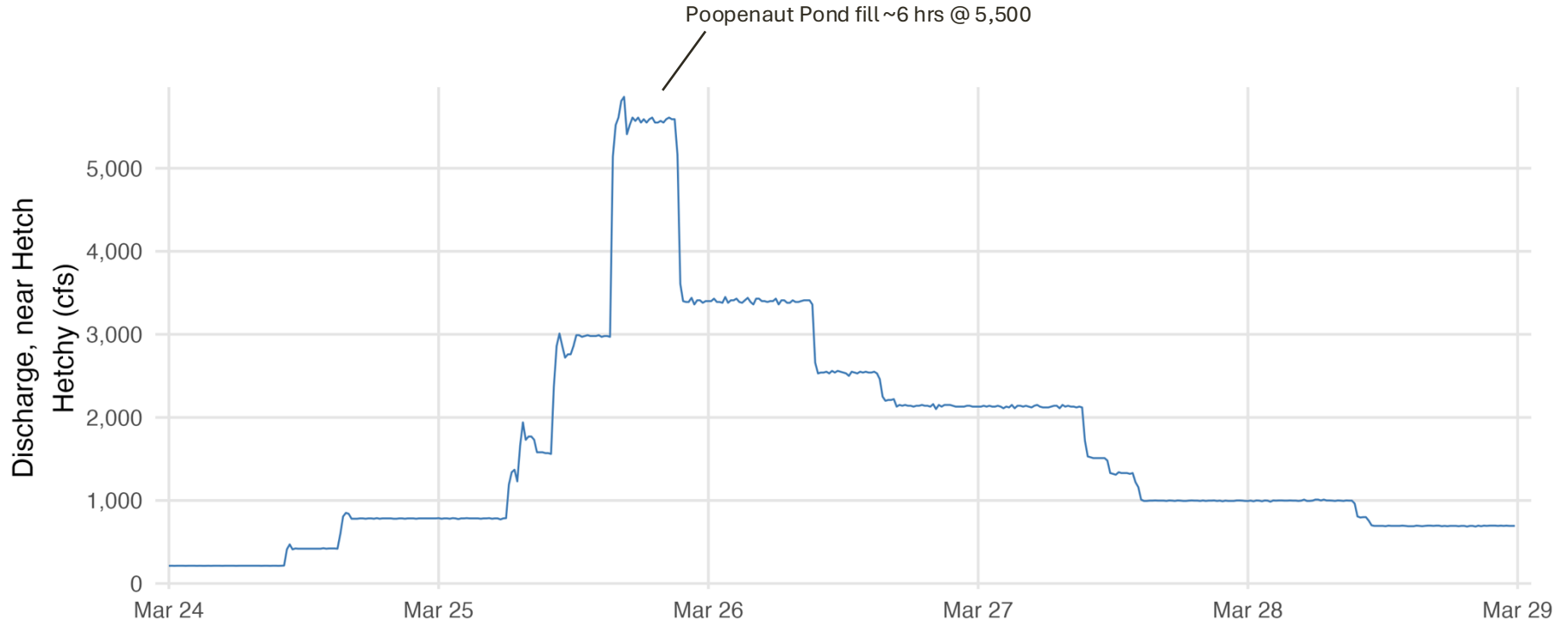


USGS: daily mean discharge at river gage. KiWIS: SFPUC daily average reservoir inflow (ts_id 33036042). CNRFC: median of HEFS daily ensemble for HETC1 full natural inflow (forecast). Sources: USGS NWIS; webserv.sfwater.org KiWIS; NOAA CNRFC.

Pond flow/fill rate/duration

Streamflow (cfs)	Fill Rate (m/hour)	Duration to fill (hours)	Total streamflow volume used (ac-ft)
4,000	0.010	203.2	67,175
4,500	0.097	21.5	7,997
5,000	0.183	11.4	4,691
5,500	0.270	7.7	3,505
6,000	0.356	5.8	2,895
6,500	0.443	4.7	2,524
7,000	0.529	3.9	2,274
7,500	0.616	3.4	2,094
8,000	0.702	3.0	1,958
8,500	0.789	2.6	1,853

2026 release



Flow panel: USGS NWIS instantaneous discharge (p-code 00060) at 11276500. Temperature: USGS 11276600 (p-code 00010). Source: USGS NWIS.

Before



After



Poopenaut Valley pond

Poopenaut Valley pond

North tributary and pond
channel complex

Sand bar

Beginning of bedrock
confined channel

South meadow complex



0 125 250 Feet

Poopenaut Valley pond

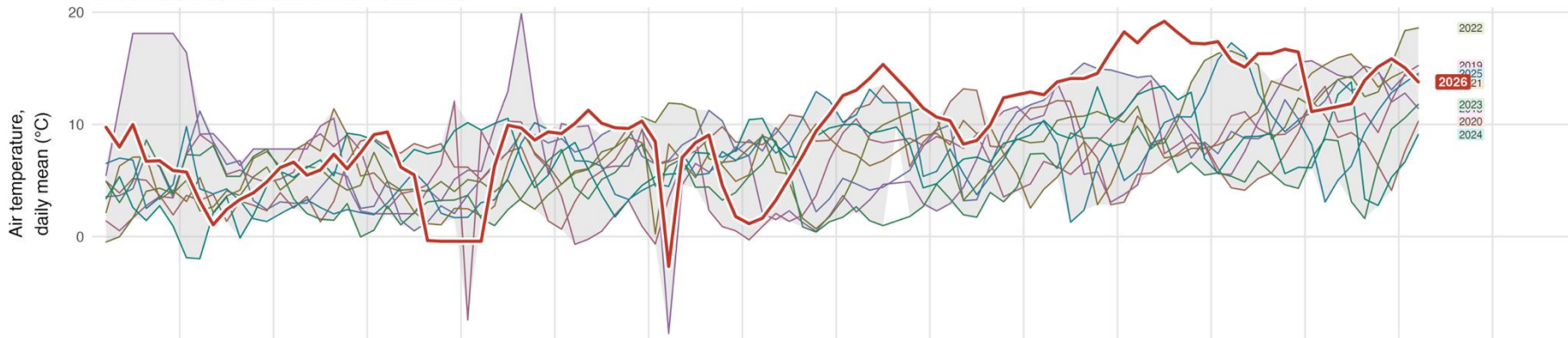
Next steps on PV filling

- Site survey of the “continental divide”
- Possible real time water level gage in the pond



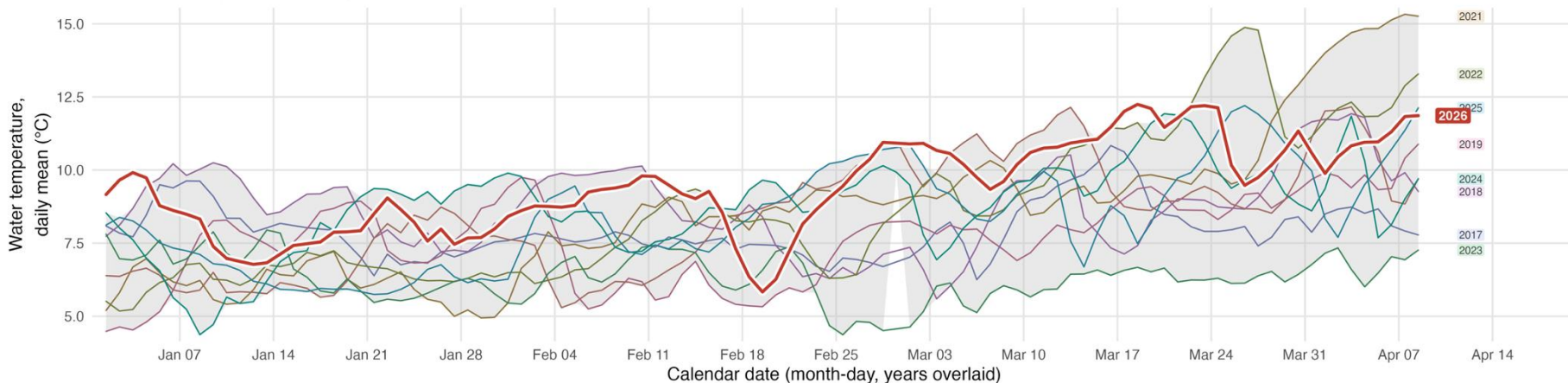
Air temperature - KiWIS Early Intake Met F11 (EI_AirTemp.DayMean)

Year-over-year daily means; Jan 1 - Apr 8 (2017-2026)



Water temperature - USGS Early Intake (11276600)

Year-over-year daily means; Jan 1 - Apr 8 (2017-2026)



Water: daily mean (°C), USGS 11276600 (p-code 00010). Window: Jan 1 through Apr 8, 2026 (same month-day each year). 15-min UV aggregated to daily when present (>=55% of days); else NWIS daily (stat 00003). Air (top): SFPUC KiWIS Early Intake Met F11 (EI_AirTemp.DayMean) (ts_id 5328042), daily mean deg F converted to °C. Prior years (2017-2025): distinct muted colors; ribbon: min-max per calendar day. 2026 emphasized (red); year labels match line colors. Pacific time. Source: USGS NWIS, SFPUC KiWIS.

The Upper Tuolumne River Ecosystem Program

A collaborative program led by the San Francisco Public Utilities Commission to advance understanding and stewardship of the Upper Tuolumne River ecosystem.

[Learn More](#)[View Meetings](#)

About UTREP

Background, mission, and goals of the Upper Tuolumne River Ecosystem Program.



Workgroup Meetings

Access meeting agendas and presentations from biannual workgroup meetings.



Data

Coming soon...

Latest Updates

[View All Meetings →](#) [View All Documents →](#)

WORKGROUP MEETING MATERIALS →



November 12, 2025

Added 4 months ago

Agenda and presentations available

LIBRARY DOCUMENTS →



Environmental Flow Study for the Hetch Hetchy Reach - Early Workgroup Draft

Added 1 year ago

[Report](#)

www.UTREP.org