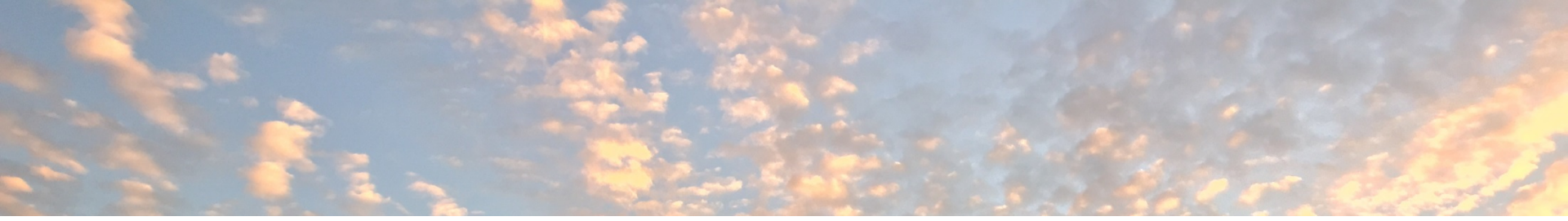




# 2018 UTREP Fisheries – Process in Pretty Pictures

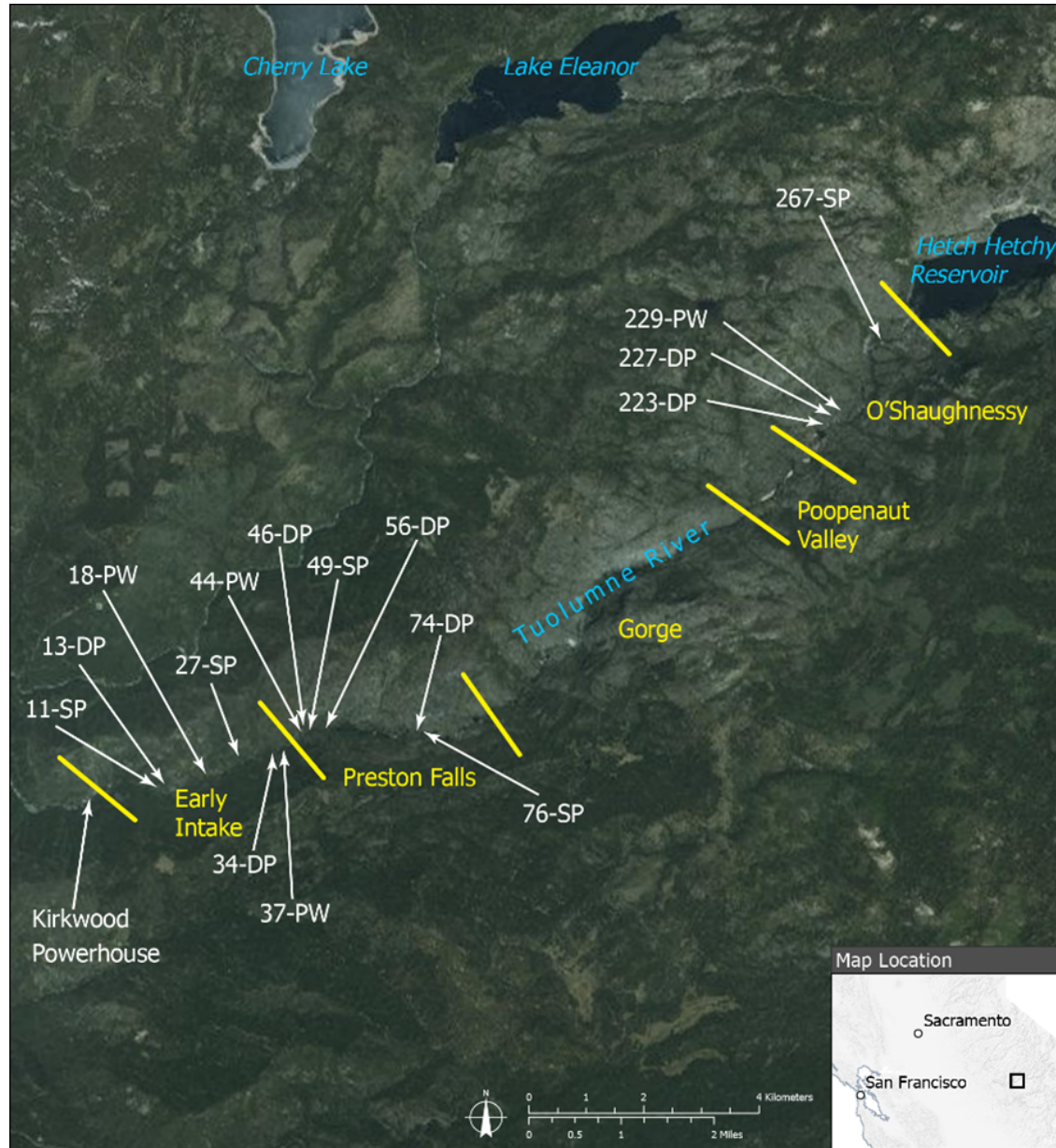




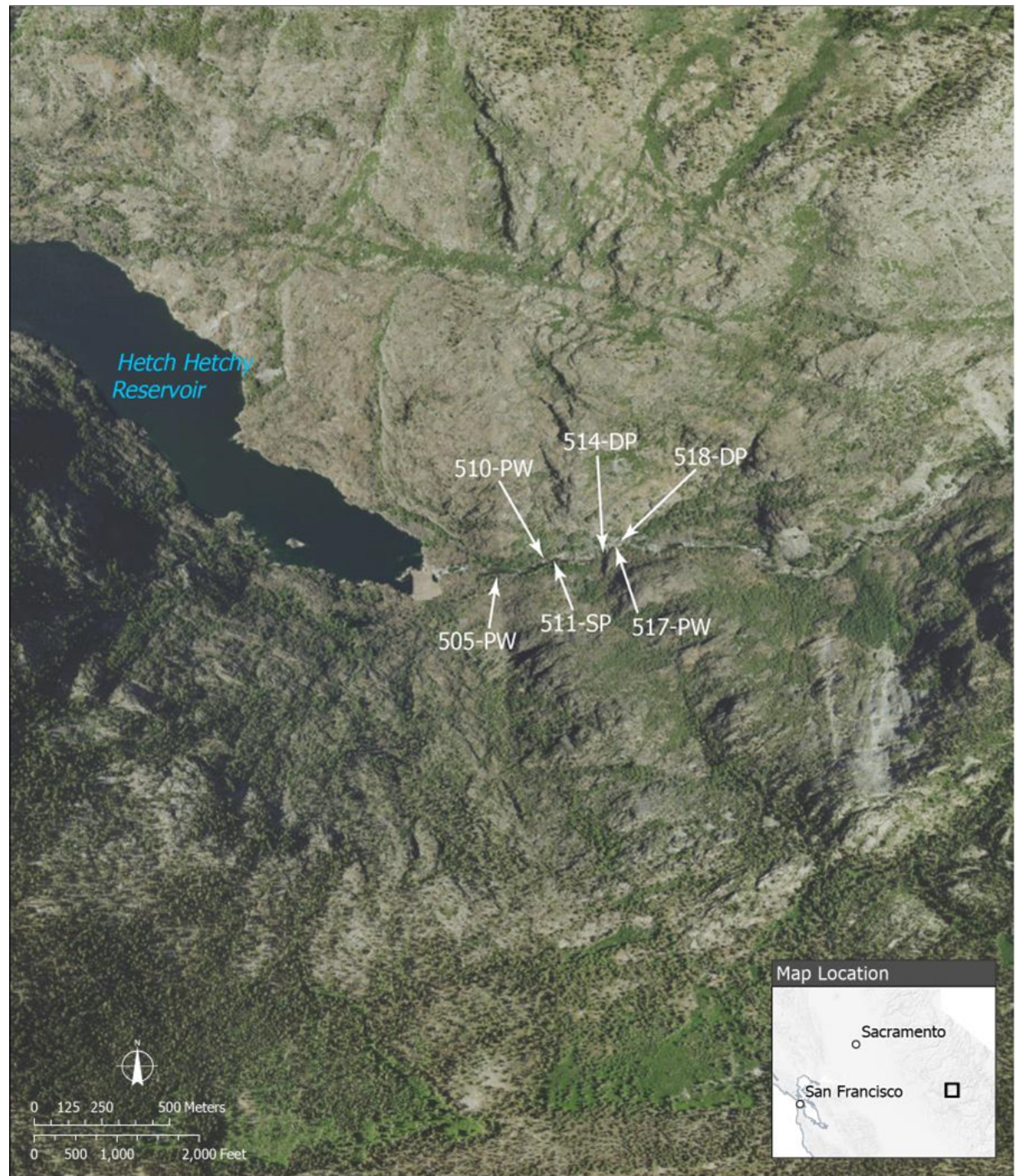
## Spring 2018 Presentation Goals

- Review methods of site selection, snorkeling methods, and data analysis
- Tease 2018 abundance data
- Set the stage for future discussion and data presentation

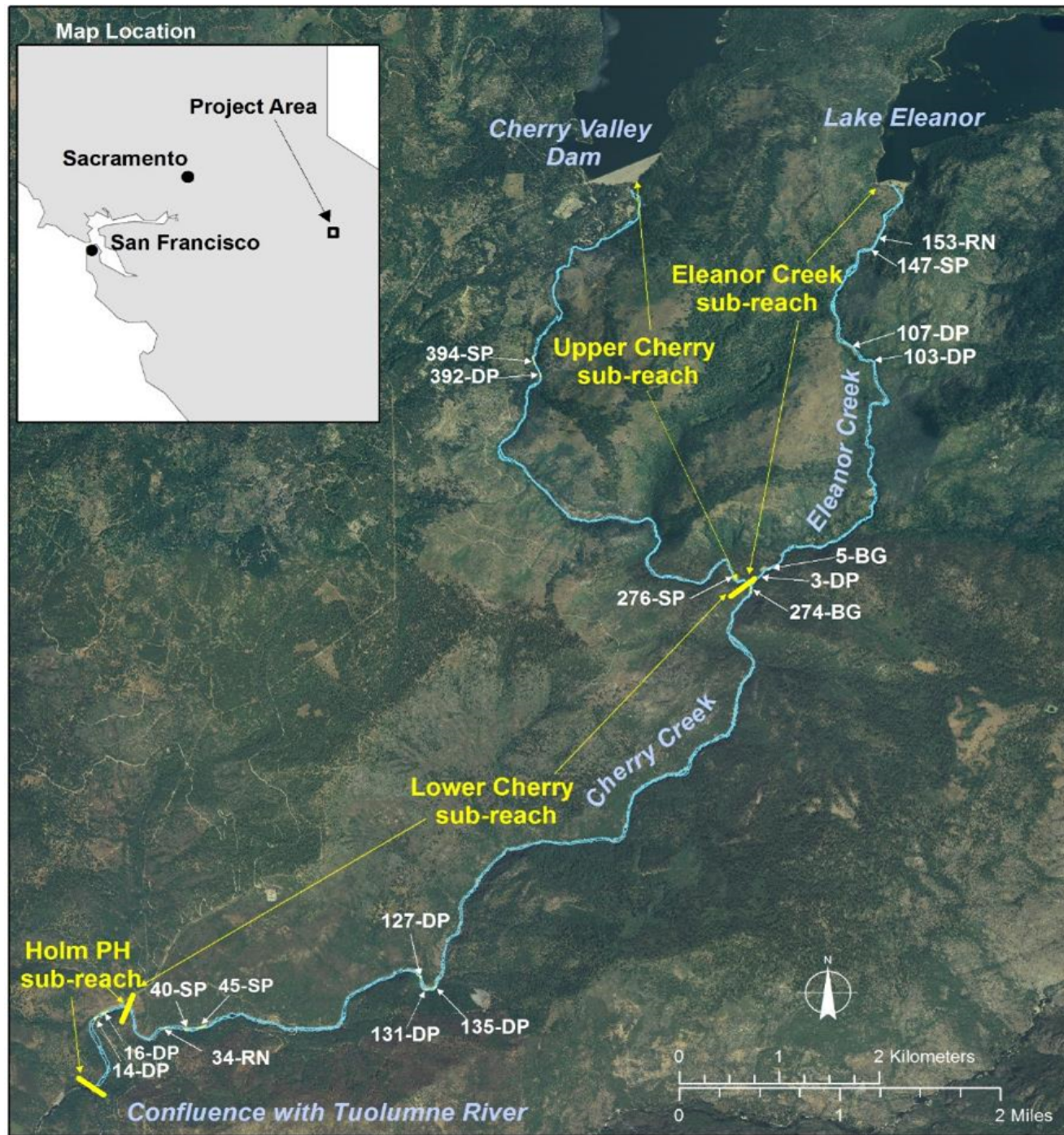
# HH Reach Reaches and Individual Sites



# Above HH Reservoir Reach

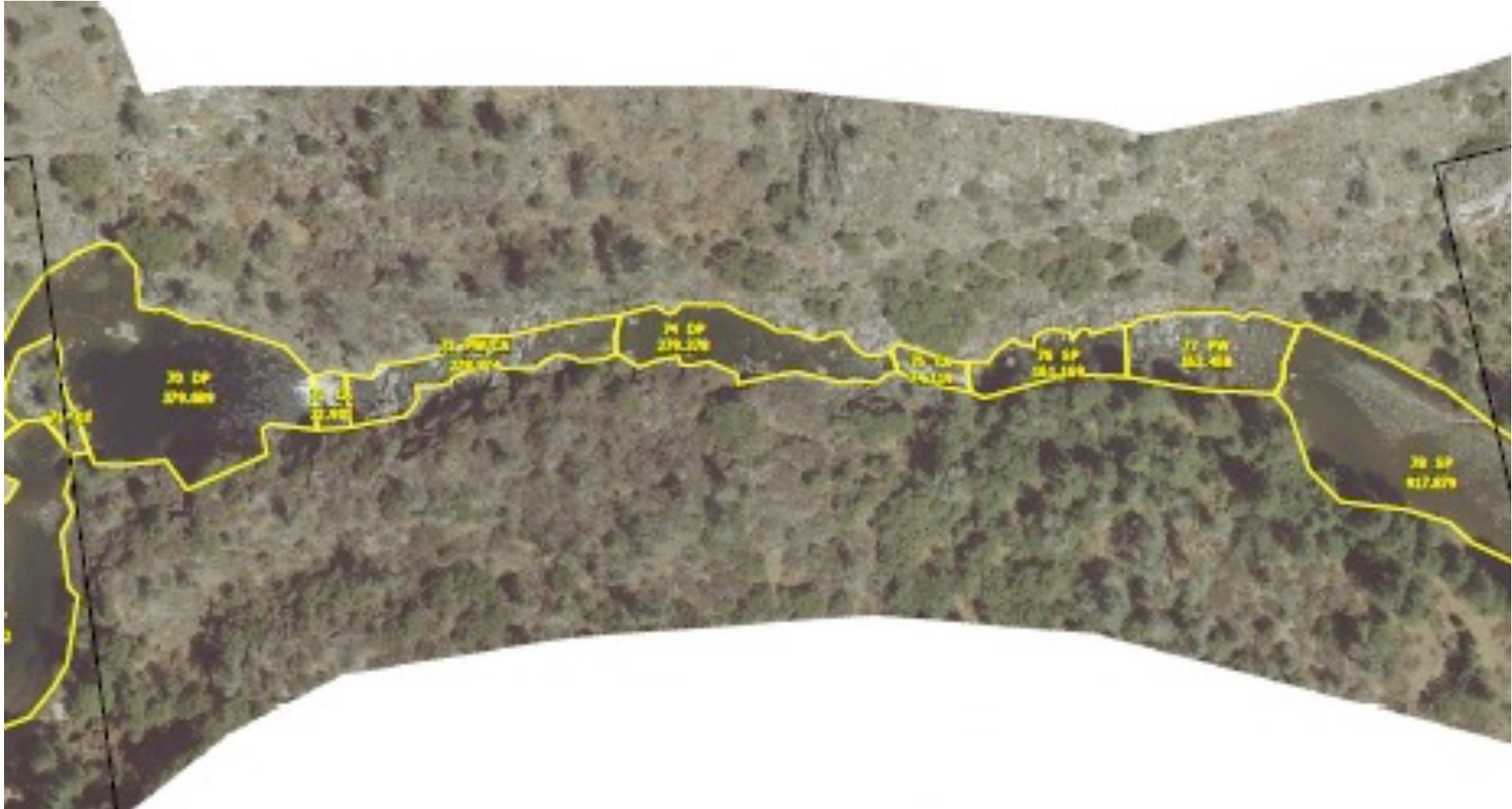


# Cherry and Eleanor Creek Reaches



# USFWS Habitat Maps

Delineated, Defined and Numbered Habitats



Site 74DP  
(Deep Pool)  
250' long



note habitat breaks

# Downstream Control – Transition to PW/CA (Habitat 73)



# Upstream Control – Transition to CA (Habitat 76)



# Three-Pass Snorkel Methods



# Results - Estimated Abundance of Rainbow and Brown Trout >125mm (also reported in density)

Year	Rainbow	Brown
2018	5	2
2017	17	1
2016	50	10
2015	89	34
2014	94	32

514DP





518DP



# Pocket Water (PW) aka Boulder Garden

- Composition (% of reach)
  - Early Intake 60%
  - Preston Falls and OSH each 16%









229PW – 217' Long



# 229PW

Trout population estimates (>125mm)

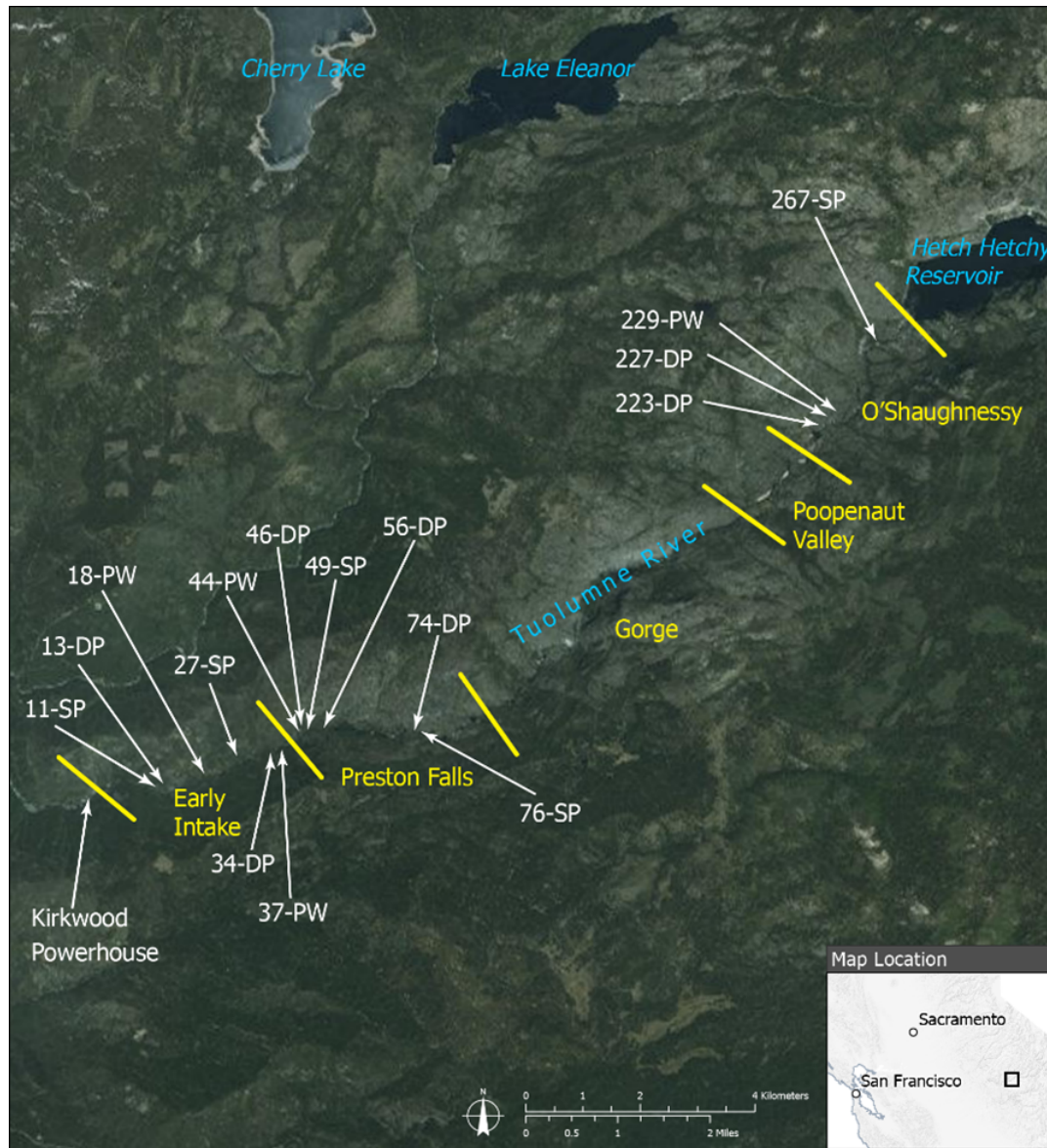
2018 – 25 RTR / 7 BTR

2017 – 32 / 6

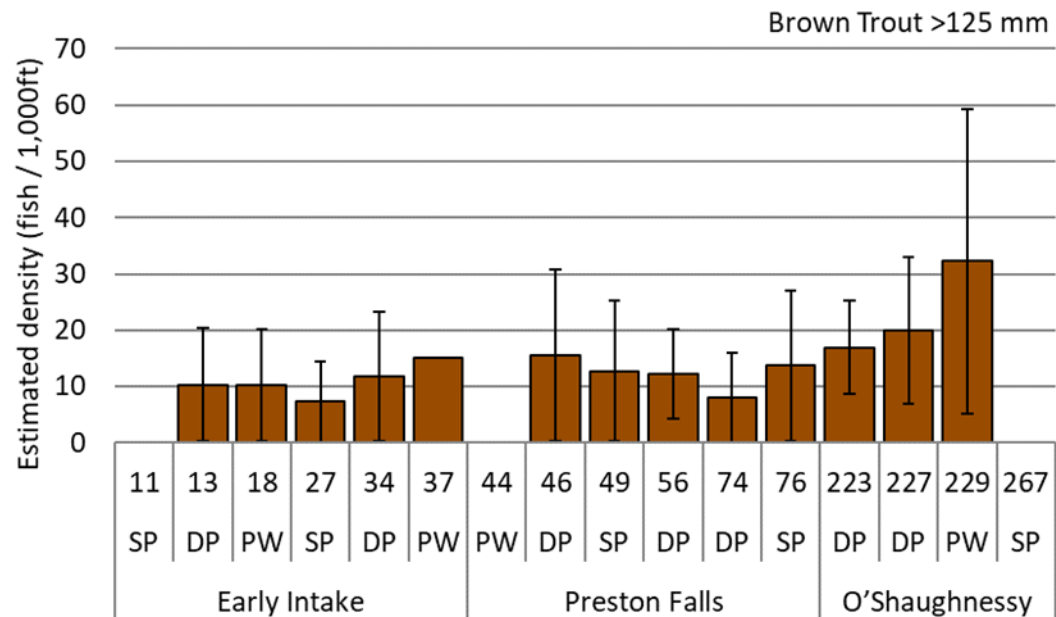
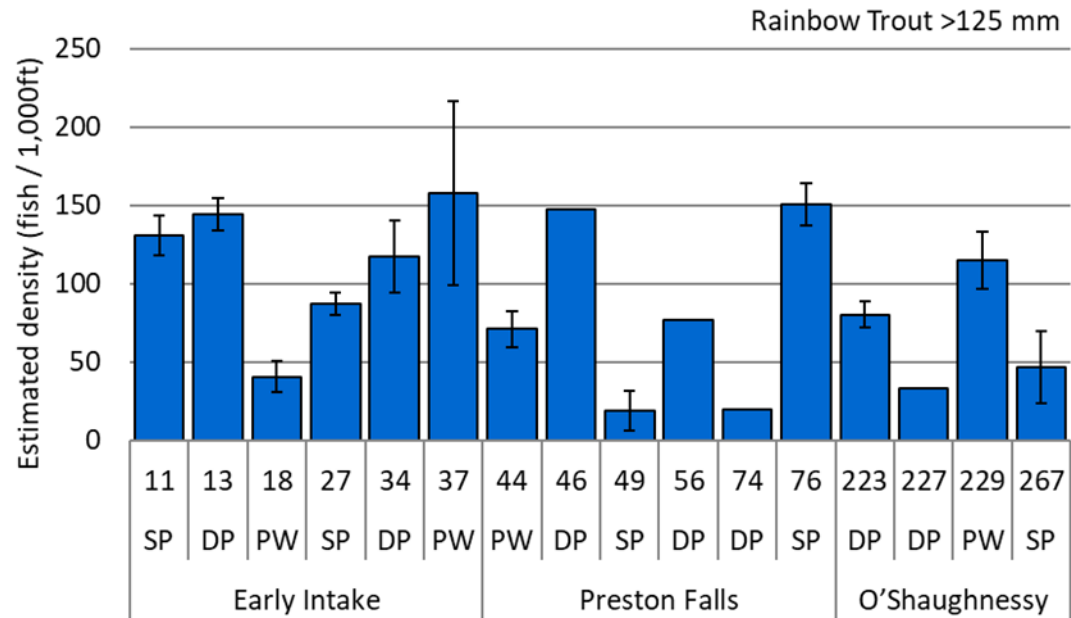
2014 – 28 / 2



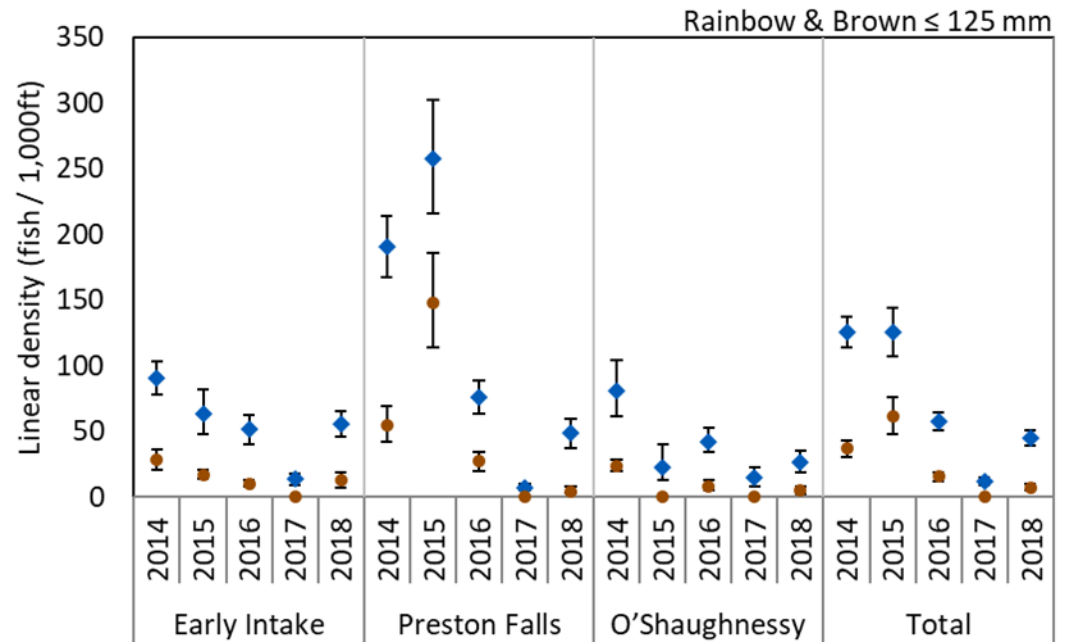
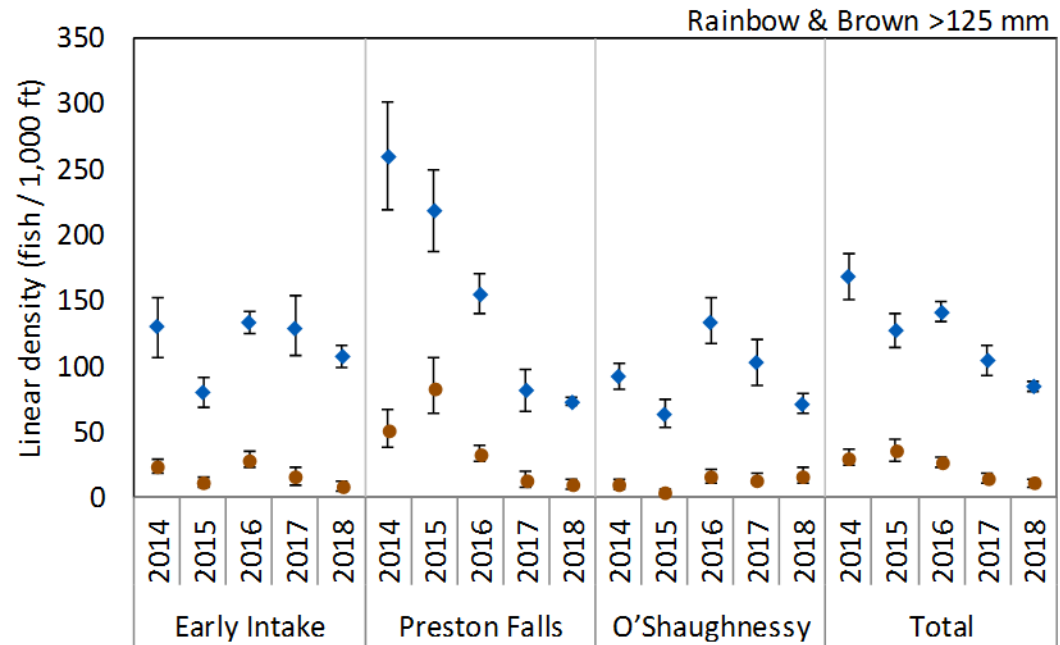
# HH Reaches and Individual Sites



# 2018 HH Reach – All sites



# Aggregate Data and Trends



# Yay, Done!

